



## Bathing establishment Fact Sheet

Bathhouse name	LILLY MARE
Address	VIA DELLE PINETE, 354
City	PARTACCIA (MS)
Contacts	+39 0585 241222
Website	<a href="https://www.lillymare.com/spiaggia-privata.php">https://www.lillymare.com/spiaggia-privata.php</a>

**TESTED BY:** [Handy Superabile - Social Promotion Association](#) in summer 2023

**Please note** The following information refers to the verification date shown at the bottom of each card. **The Association** is not responsible for any significant changes made by the property after the visit.

### Summary

Bathing establishment Fact Sheet .....	1
Arrival at the facility .....	2
Private/public parking.....	2
Pathway from the parking lot to the main entrance .....	2
Reception.....	3
Bar/restaurant .....	4
Internal Pathways and common services.....	5
Internal Pathways .....	5
Toilet and shower accessible to guests with reduced mobility .....	6
Changing room .....	8
Beach.....	8
Children's play area .....	9
Swimming pool .....	10
Doctors' Offices/Healthcare Facilities .....	10

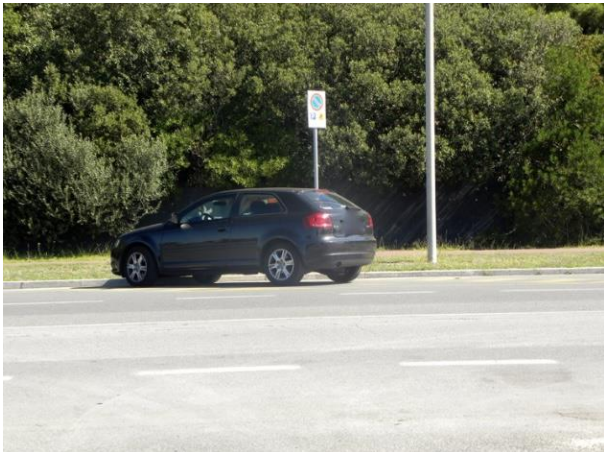

Project carried out with the contribution of the





## Arrival at the facility

### Private/public parking

Presence of private parking	YES
Type of private car park	gravel
Presence of parking space reserved for people with disabilities	NO
Public parking nearby	YES with n.1/2 places reserved for the disabled at approx. 150/200 meters
Type of public car park	asphalt
	

### Pathway from the parking lot to the main entrance

Pathway from the car park to the entrance	From the public car park via connecting ramps from the road surface to the sidewalks. The entrance is accessible on a level level
There are markers and tactile maps	NO
Usable door/entrance width	more than 90 cm

Project carried out with the contribution of the





Factory Entrance

### Reception

Umbrella booking system	<input type="checkbox"/> Via web <input checked="" type="checkbox"/> By phone <input checked="" type="checkbox"/> On-site
Presence of multilingual staff	YES
Presence of plant plan with key to services available	NO

Project carried out with the contribution of the





Presence of visuo-tactile map	NO
Bulletin board/information panels at an average height of 130 cm in a well-lit area and font size at least 14 dpi with a contrast ratio greater than 4.5:1	NO
The staff attended training courses on welcoming people with different disabilities	NO

### Bar/restaurant

Type of venue	Snack bar
Access to the premises	Externally level. To access beverage vending machines with a 20 cm high step
Usable door/entrance width	more than 90 cm
Bar counter	more than 100 cm
Types of tables	4-legged
Space underneath the tables from the floor	64 cm
Multilingual menu	NO
Menus with large print fonts	NO
Braille menu	NO
Table service for people with disabilities	YES
Availability of gluten-free food	<input type="checkbox"/> bread <input type="checkbox"/> pasta <input checked="" type="checkbox"/> biscuits <input checked="" type="checkbox"/> ice cream <input type="checkbox"/> Pre-packaged foods





## Internal Pathways and common services

### Internal Pathways

Indicate whether the pathways connecting the entrance to the beach are flat or with ramps in addition to those already described

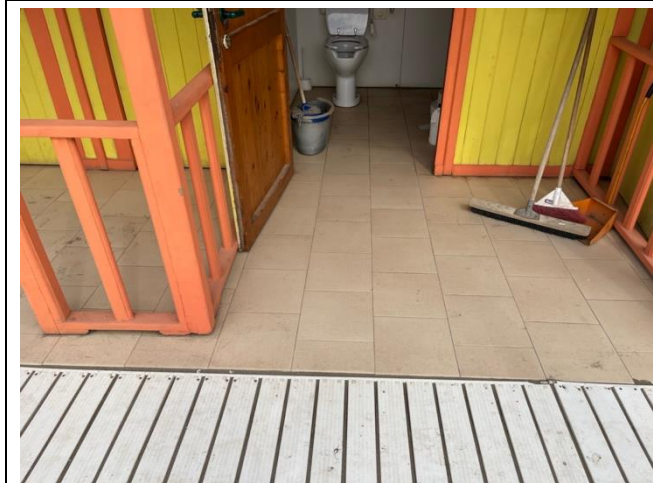
Obstacle-free paths





**Toilet and shower accessible to guests with reduced mobility**

Number <b>of toilets</b> accessible/usable by guests with reduced mobility	1
Access to the premises	Flat
Usable width of the entrance door	90 cm
Toilet height	48 cm
Open front toilet seat	YES
Support handles	to the left of the toilet
Flexible hand shower at the side of the toilet	YES
Free space on the sides of the toilet	left more than 90 cm right 30 Cm frontal more than 90 cm
Electric doorbell/phone	YES
Washbasin with space underneath for wheelchair	60 cm
Height from the ground on the bottom edge of the mirror	missing
Baby changing table	NO





	<p>Toilet interior</p>
<p>Accessible <b>shower</b> available for guests with reduced mobility</p>	<p>Yes outdoor without canopy</p>
<p>Access to the shower room if separated from the toilet room</p>	<p>Flat</p>
<p>Useful width of the door/entrance gate if separated from the toilet room</p>	<p>more than 90 cm</p>
<p>Shower type</p>	<p>open-type</p>
<p>Floor-level shower</p>	<p>YES</p>
<p>Shower chair</p>	<p>missing</p>
<p>Grab bar</p>	<p>missing</p>
<p>Presence of shower head or ups and downs</p>	<p>fixed shower head</p>
<p>Electric doorbell/phone</p>	<p>NO</p>





**Changing room**

Accessible changing room available for guests with reduced mobility	NO
---	----

**Beach**

Type of beach	sand
Access to the beach	Flat
Walkway to reach the umbrellas	YES
Type of walkway	PVC
Walkway width	90 cm





	<p>Beach walkway</p>
<p>Removable Platform between the walkway and the umbrella station to facilitate the passage and parking wheelchair</p>	<p>YES</p>
<p>Amphibious beach chair available for helping people with reduced mobility to enjoy swimming (owned by the establishment or by association)</p>	<p>YES</p>

**Children's play area**

<p>Children's play area</p>	<p>missing</p>
-----------------------------	----------------



Project promoted by



Regione Toscana

### Swimming pool

The property has a swimming pool	NO
----------------------------------	----

### Doctors' Offices/Healthcare Facilities

Hospitals near the facility	NOA NUOVO OSPEDALE APUANE Via Enrico Mattei, 2 54100 Marina di Massa MS Tel.: +39 05854931
Other Healthcare Facilities	Località Partaccia Via delle Pinete 197/b Marina di Massa Tel.: +39 33581617

TESTED BY: **Handy Superabile Social Promotion Association in summer 2023**

Project carried out with the contribution of the



Presidenza del  
Consiglio dei Ministri  
Ministro per la disabilità